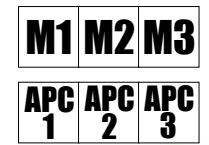
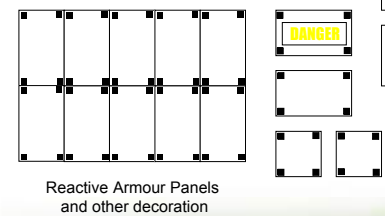
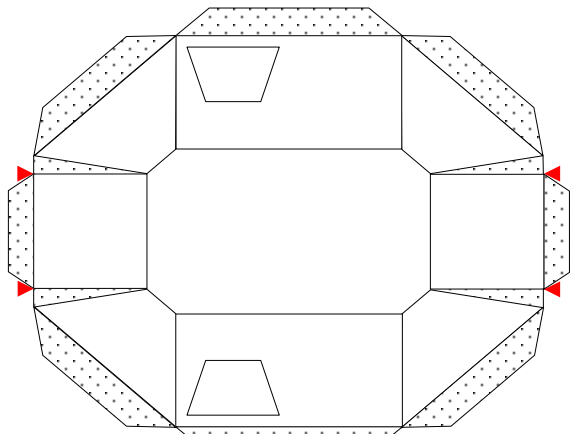
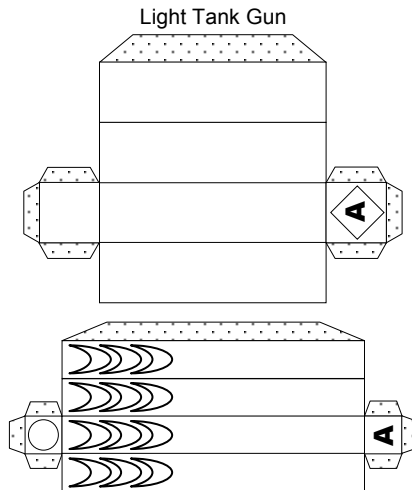


**Missile Tank / APC**  
**15mm Model**  
 Available Free from  
**Germ's World**  
[www.germy.co.uk](http://www.germy.co.uk)

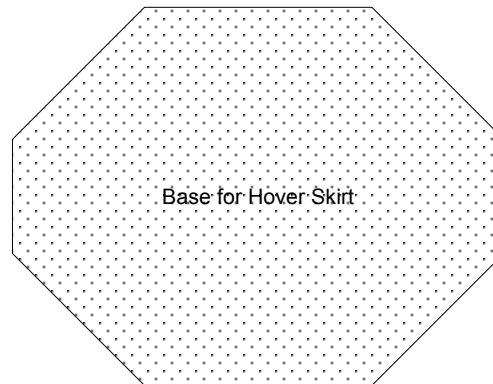




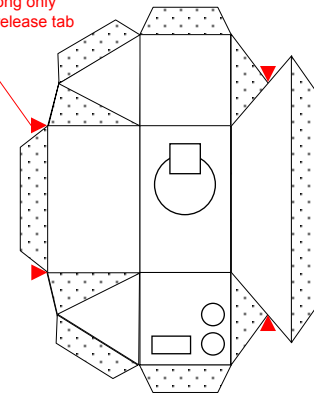
Light Hover Skirt



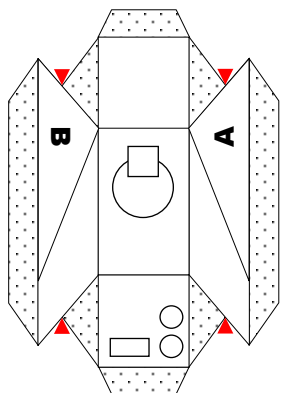
Light Tank Gun



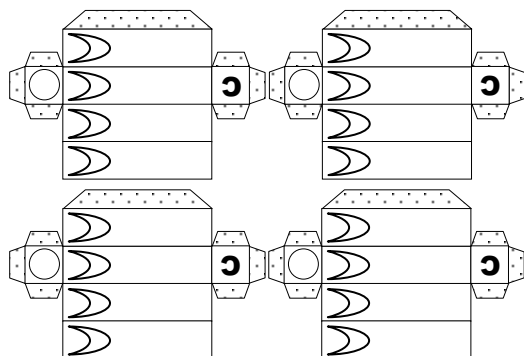
Base for Hover Skirt



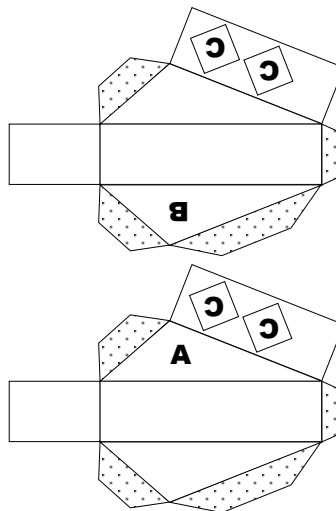
Light Tank Turret



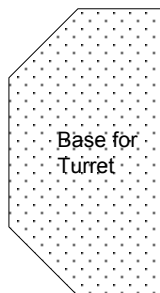
AA Gun Turret



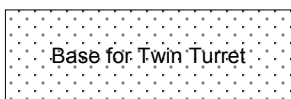
AA Guns



**AA Turret alternative  
For use with Hover Skirt**

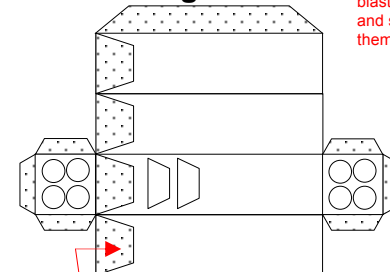


Base for  
Turret

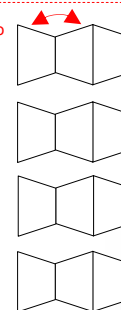


Base for Twin Turret

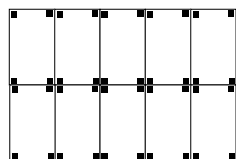
**Missile Tube  
Alternative gun mount**



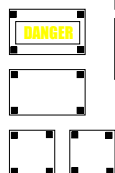
Fold these two parts of each blast fin over and stick them together



Once missile tube is built stick blast fins onto these points

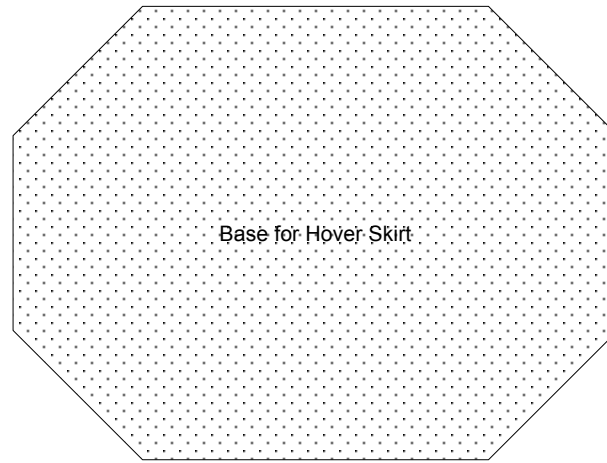
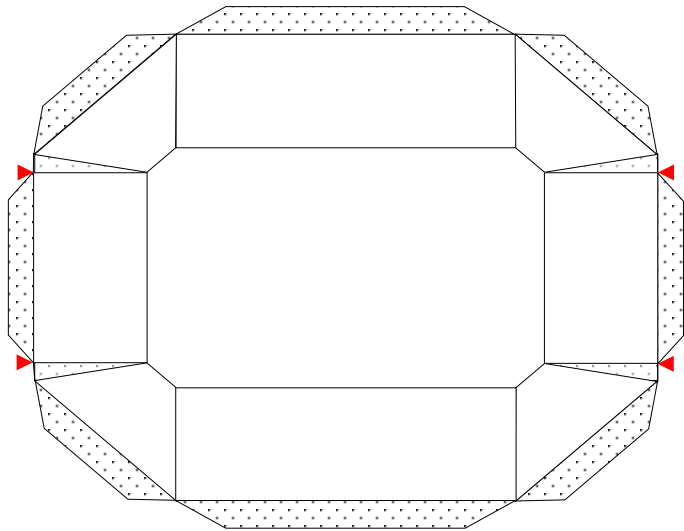


Reactive Armour Panels and other decoration



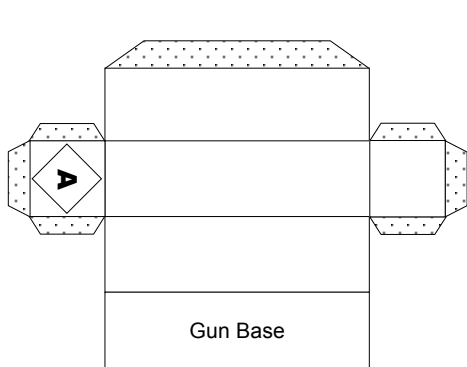
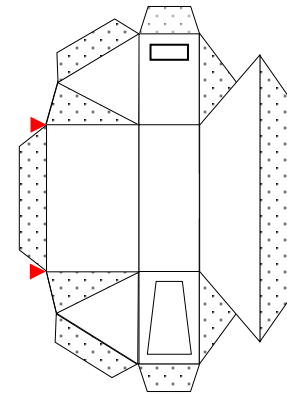
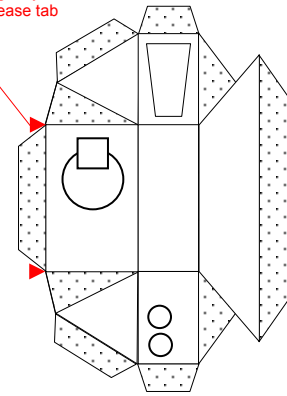
**Light Tank  
with Gun / Missile / AA  
turret options  
15mm Model  
Available Free from  
Germ's World  
www.germy.co.uk**



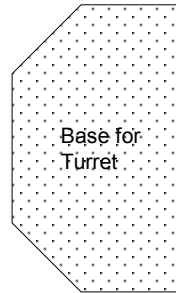


Base for Hover Skirt

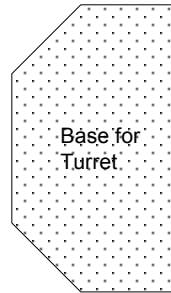
After cutting out parts and scoring along all black lines cut along only the black lines marked to release tab



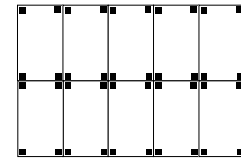
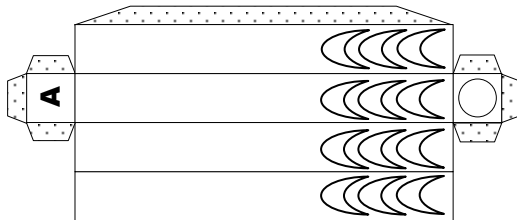
Gun Base



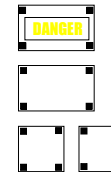
Base for Turret



Base for Turret



Reactive Armour Panels and other decoration



<b>T1</b>	<b>T2</b>	<b>T3</b>
<b>T4</b>	<b>T5</b>	<b>T6</b>

**Heavy Tank  
15mm Model**  
Available Free from  
Germ's World  
[www.germy.co.uk](http://www.germy.co.uk)

